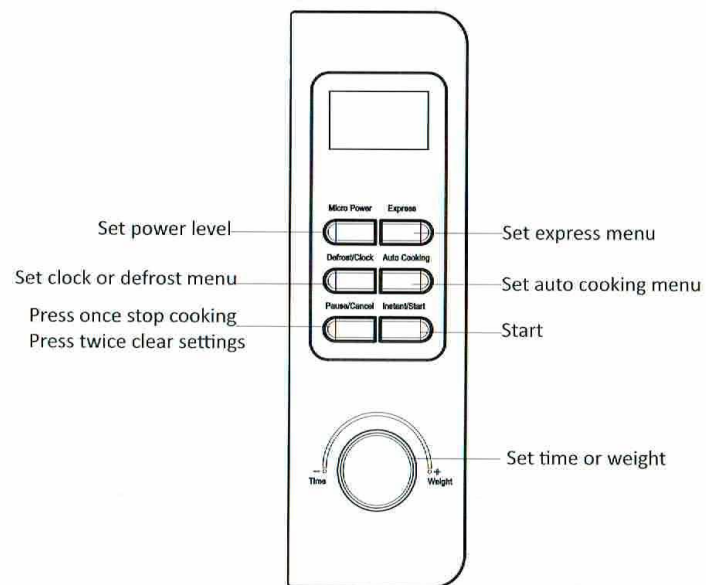


Control panel



First use of microwave oven

There may be some manufacturing residue or lubricants in the oven cavity or heating element, which may smell or even produce a slight smoke. It is normal and would cease after several times of use. Keep a door or window open to ensure good ventilation. It is strongly recommended to place a cup of water on the turntable and operate in high power for few minutes.

Function and operation method

The LED flashes 3 times when plugged in mains socket. Then ":" flashes prompting you to input the cooking menu and time.

Auto reminder

When microwave operation has finished, the LED display will show **End** and three beeps sound prompting you to remove your food. If **Pause/Cancel** button was not pressed or door was not opened, beep sound at a 3 minutes interval.

Clock setting

Please see below steps to set the time on the display

For example: to set 12:30		
	Steps	Display
1	After power-up, the colon flashes.	1:00
2	Press and hold Defrost/Clock button for 3 seconds.	1:00
3	Turn Time/Weight knob to set exact hours.	12:00
4	Press Defrost/Clock button once again.	12:00
5	Turn Time/Weight knob to set exact minutes.	12:30
6	Press Defrost/Clock button once again or wait for 60 seconds, and the numbers will go steadily.	

Microwave cooking

To cook/heat food, press **Micro Power** button, the follow LED cycles will be displayed, 100P – 80P – 60P – 40P – 20P

High power	100P-100% microwave power. Applicable for quick and thorough cooking
Medium High power	80P-80% microwave power. Applicable for medium express cooking
Medium power	60P-60% microwave power. Applicable for steaming food
Medium Low power	40P-40% microwave power. Applicable for defrosting food
Low power	20P-20% microwave power. Applicable for keeping warm

NOTE:

- The maximum time can be set is 60 minutes.
- Never operate the oven empty.